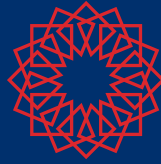


PEMBROKE

Olive Downs Coking Coal Project
Additional Information to the
Environmental Impact Statement



PEMBROKE

Olive Downs Coking Coal Project

Additional Information to the
Environmental Impact Statement

Section 1

Introduction

1 INTRODUCTION

Pembroke Olive Downs Pty Ltd (Pembroke) proposes to develop the Olive Downs Coking Coal Project (herein referred to as the Project), a metallurgical coal mine and associated infrastructure within the Bowen Basin, located approximately 40 kilometres (km) south-east of Moranbah, Queensland (Figure 1-1). The Project provides an opportunity to develop a metallurgical coal resource within the Bowen Basin mining precinct that can deliver up to 20 million tonnes per annum (Mtpa) of run-of-mine (ROM) coal and sustain peak construction and operational workforces of approximately 700 and 1,300 people, respectively.

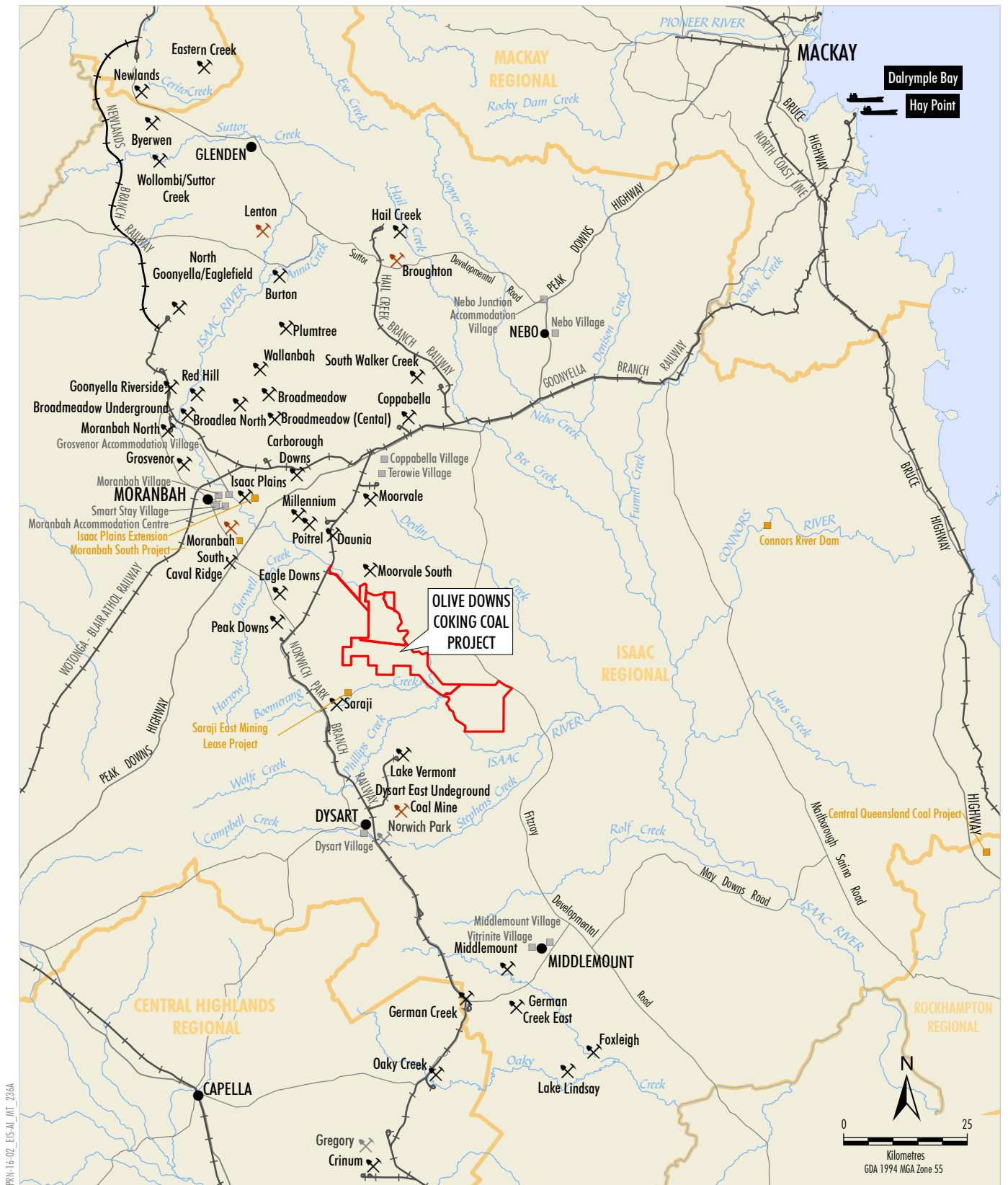
The Project comprises the Olive Downs South and Willunga domains and associated linear infrastructure corridors, including a rail spur connecting to the Norwich Park Branch Railway, a water pipeline connecting to the Eungella pipeline network, an electricity transmission line (ETL) and access roads (Figure 1-2). The coal resource would be mined by conventional open cut mining methods, with product coal to be transported by rail to the Dalrymple Bay Coal Terminal. The Project would have an operational life of approximately 79 years.

The Project was declared a 'Coordinated Project' for which an Environmental Impact Statement (EIS) is required under Part 4 of the Queensland *State Development and Public Works Organisation Act, 1971* (SDPWO Act) on 17 February 2017.

On 27 July 2018, Pembroke submitted the draft EIS for the Project to the Coordinator-General. The public exhibition period for the draft EIS commenced on 12 September 2018 and concluded on 10 October 2018. During the public exhibition period, Pembroke received submissions from the following:

- Isaac Regional Council;
- Department of Environment and Science;
- Department of the Environment and Energy;
- Department of Natural Resources, Mines and Energy;
- Department of Agriculture and Fisheries;
- Department of Transport and Main Roads;
- Department of Education;
- Department of Aboriginal and Torres Strait Islander Partnerships;
- Queensland Ambulance Services;
- Queensland Health;
- Independent Expert Scientific Committee; and
- 27 private submitters (including 23 submissions in support of the Project).

On 12 December 2018, in consideration of the draft EIS and all submissions received during the public exhibition period, the Coordinator-General decided, in accordance with section 34A(1)(b) of the SDPWO Act, not to accept the draft EIS as the final EIS, and requested that additional information about the environmental effects of the Project be provided.



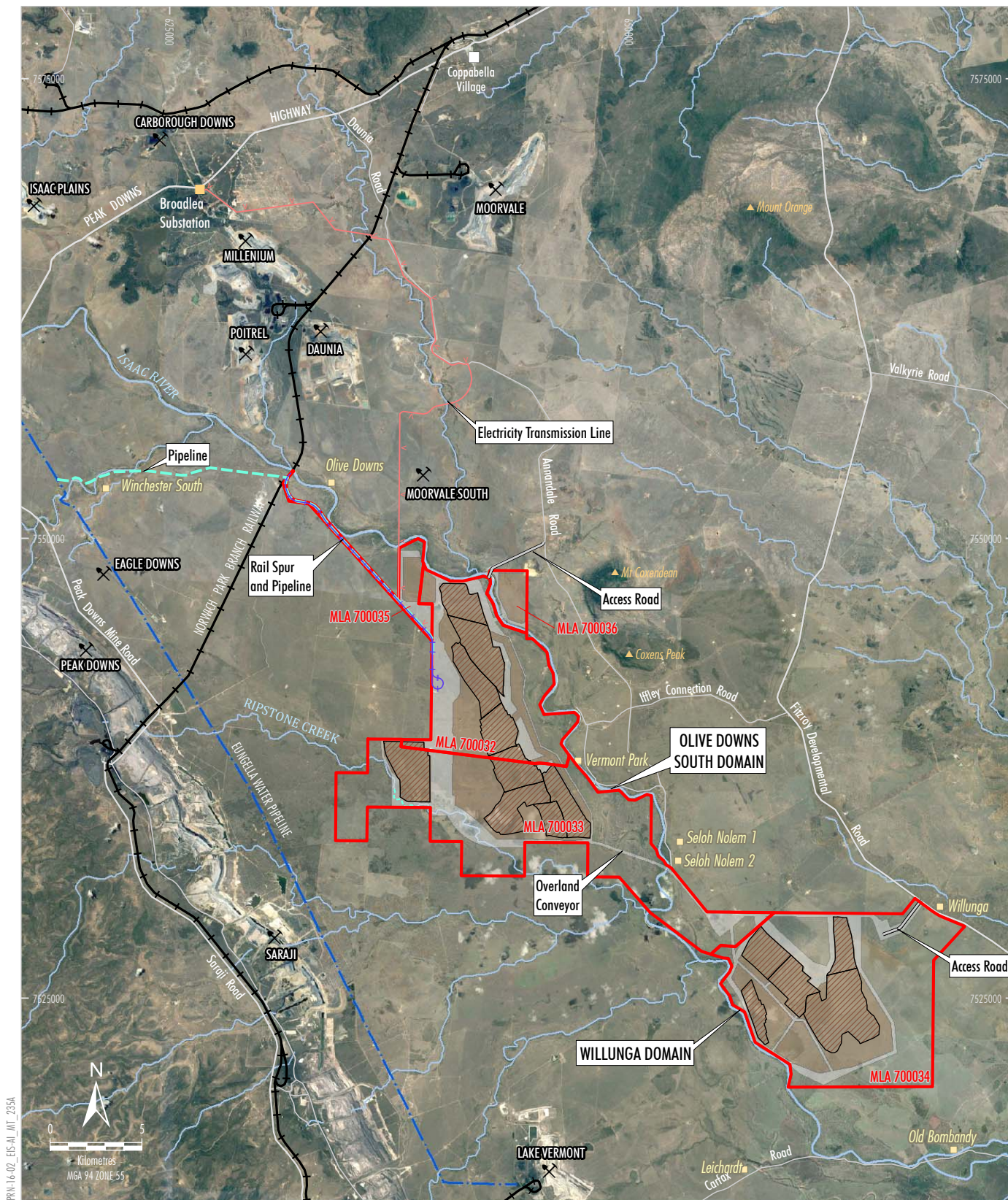
Source: Geoscience Australia - Topographical Data 250K (2006); Department of Natural Resources and Mines (2016)



OLIVE DOWNS COKING COAL PROJECT

Regional Location

Figure 1-1



PRU-16-02, EIS AL INT 235A

- LEGEND**
- Mining Lease Application Boundary
 - Approved/Operating Coal Mine
 - Dwelling
 - Eungella Pipeline Network
 - Railway
 - Proposed Access Road
 - Proposed Electricity Transmission Line
 - Proposed Rail
 - Proposed Water Pipeline
 - Proposed Creek Diversion
 - Open Cut Pit Extent
 - Out-of-Pit and In-Pit Waste Rock Emplacement
 - Infrastructure Area

Source: Geoscience Australia - Topographical Data 250K (2006)
Queensland Department of Natural Resources and Mines (2016)
Orthophotography: Google Image (2016)



OLIVE DOWNS COKING COAL PROJECT
Project General Arrangement

Figure 1-2

In accordance with section 34C(2) of the SDPWO Act, this document provides the additional information to the draft EIS which the Coordinator-General has requested, to allow the Coordinator-General to accept the draft EIS as the final EIS.

The remainder of this document is structured as follows:

- Sections 2 to 24: Provides additional information to the draft EIS, to address the information requirements issued by the Coordinator-General on 12 December 2018.
- Section 25: Provides a list of the information sources used throughout Sections 2 to 24.
- Appendix A: Detailed responses to all submissions received on the draft EIS.
- Appendix B: Revised proposed Environmental Authority conditions.
- Appendix C: MEDLI Modelling undertaken for the Project.
- Appendix D: Additional information on the rehabilitation strategy for the Project.
- Appendix E: Additional assessment of potential impacts to Groundwater Dependent Ecosystems and Wetlands.
- Appendix F: The Biodiversity Offset Strategy for the Project.
- Appendix G: Additional Information on the Road Transport Assessment.
- Appendix H: The Project Waste Management Program.
- Appendix I: The Preliminary Project Workforce Housing and Accommodation Plan.
- Appendix J: The Preliminary Project Health and Community Wellbeing Plan.